

# Martell Home Builders, Inc.

10 Minutes From the Port Jervis Commuter Train

## Custom Built Split-Level Home

2000 Sq. Ft. Living Space - 3 Bedrooms - 2 1/2 Baths - Kitchen - Living - Dining - Family Room  
Situated on 1+ Acre Parcel - Eagle Court, Sparrowbush, Orange Co., New York  
Quiet Child Friendly Culdesac - Eldred Central School District

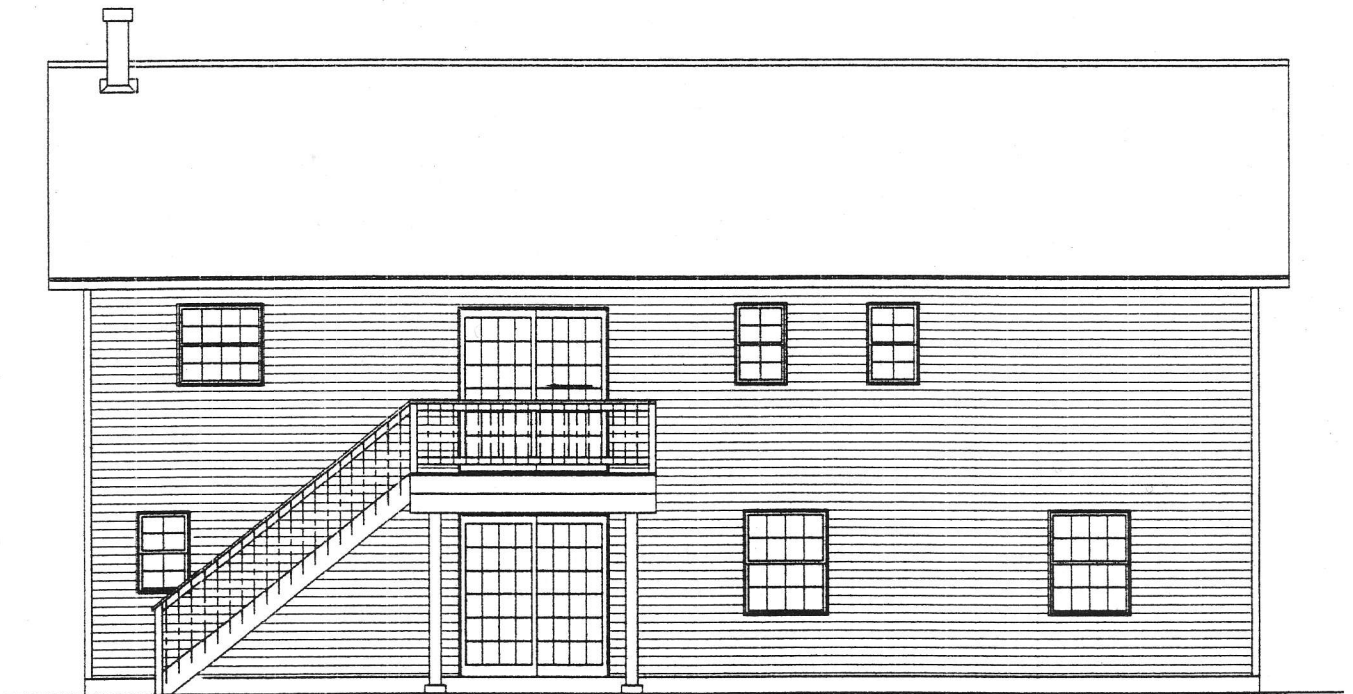
### *Features:*

Cornice Return at Eaves with 16" Overhangs - Grilles All Windows & Sliding Glass Doors  
Double Hung HPG Vinyl Tilt Sash Feature Windows - Decorative Front Gables with Scallops  
Architectual Shingles - 7/12 Pitch Roof - Cathedral Ceiling Over Kitchen, Living, & Dining Rooms  
Kitchen Island - Oak Stiar Railing - Hot Water Base Board Heat 3 Zones  
10 x 10 Open Sun Deck - 6 x 8 Front Entry Deck - Circle Top Window Over Front Door  
Over Sized 2 Car Garage - Carriage Look Garage Doors  
Over Hang Above Garage Doors with High Hat Lights

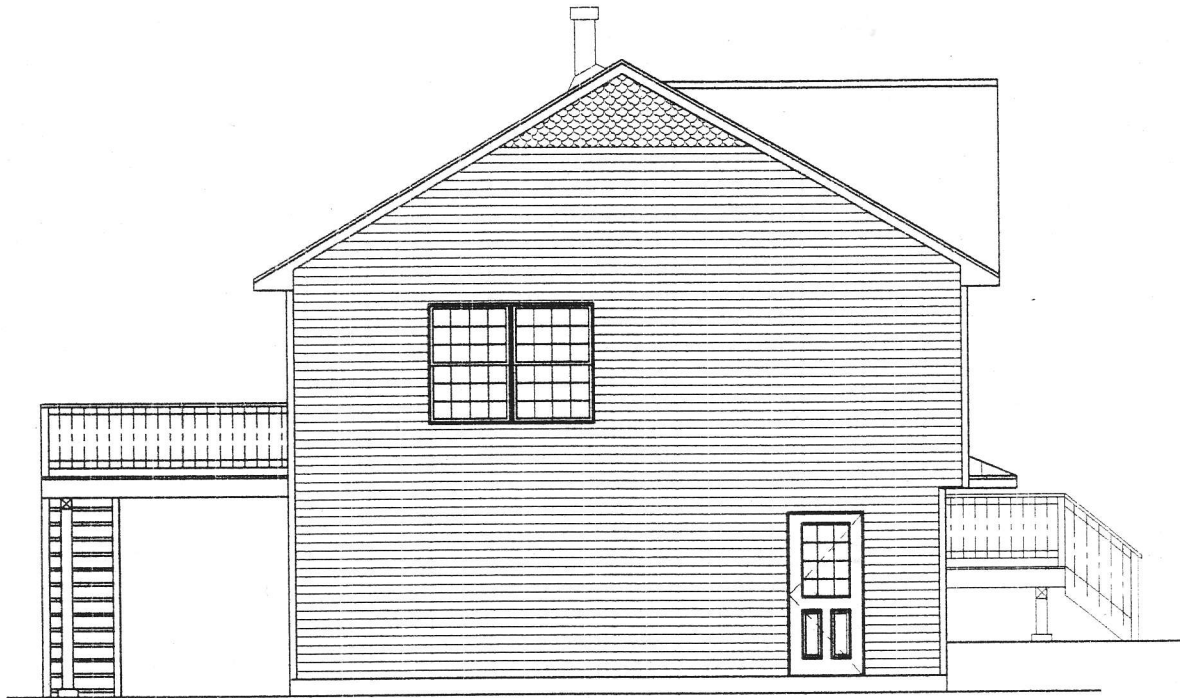
*Direct From Builders: \$ 229,000.00*



FRONT ELEVATION



REAR ELEVATION



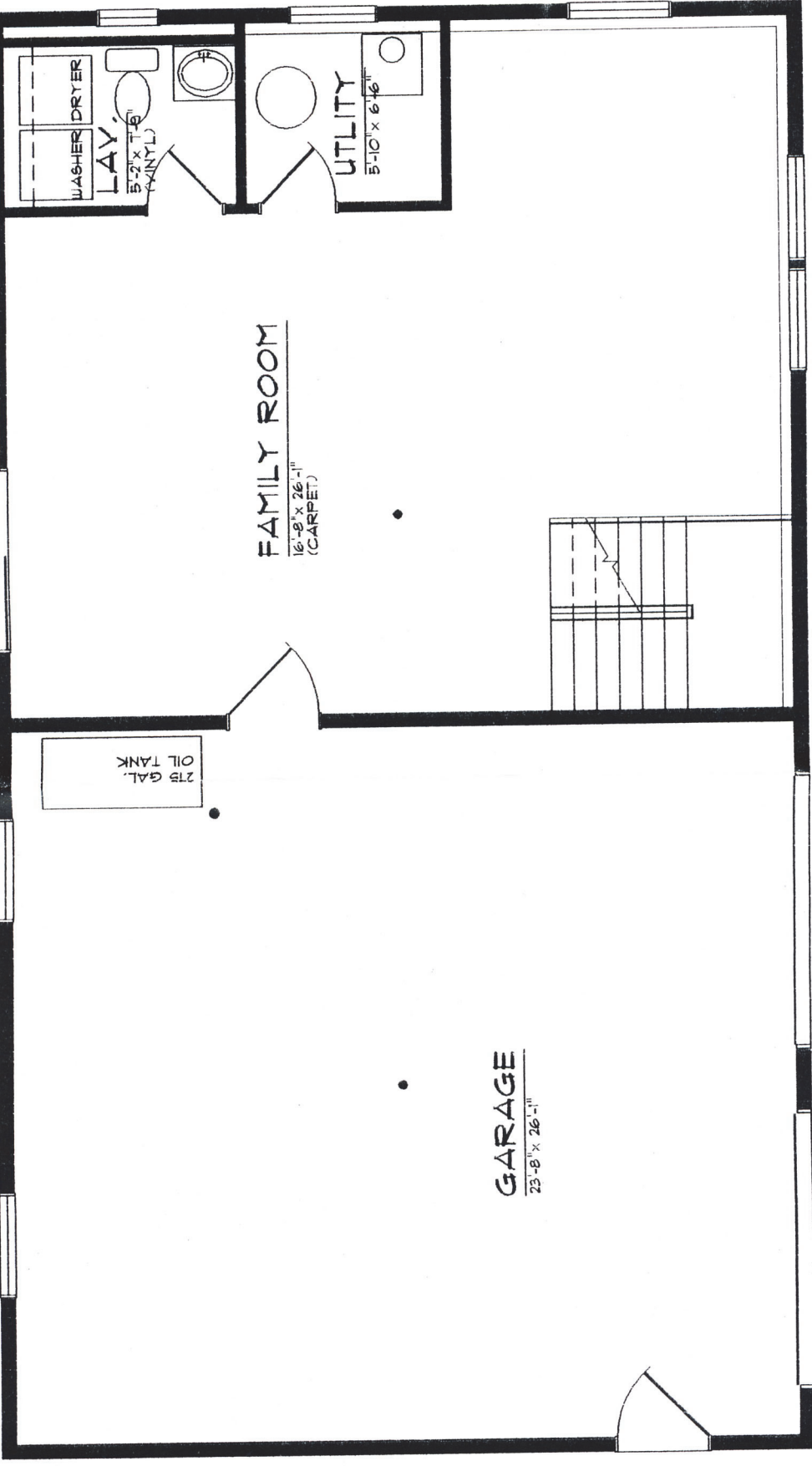
LEFT SIDE ELEVATION



RIGHT SIDE ELEVATION

48'-0"

27'-0"



# FOUNDATION PLAN

NOT TO SCALE 1268 SQ. FT.

48'-0"

# Main Level

